

1033-12  
1033-13

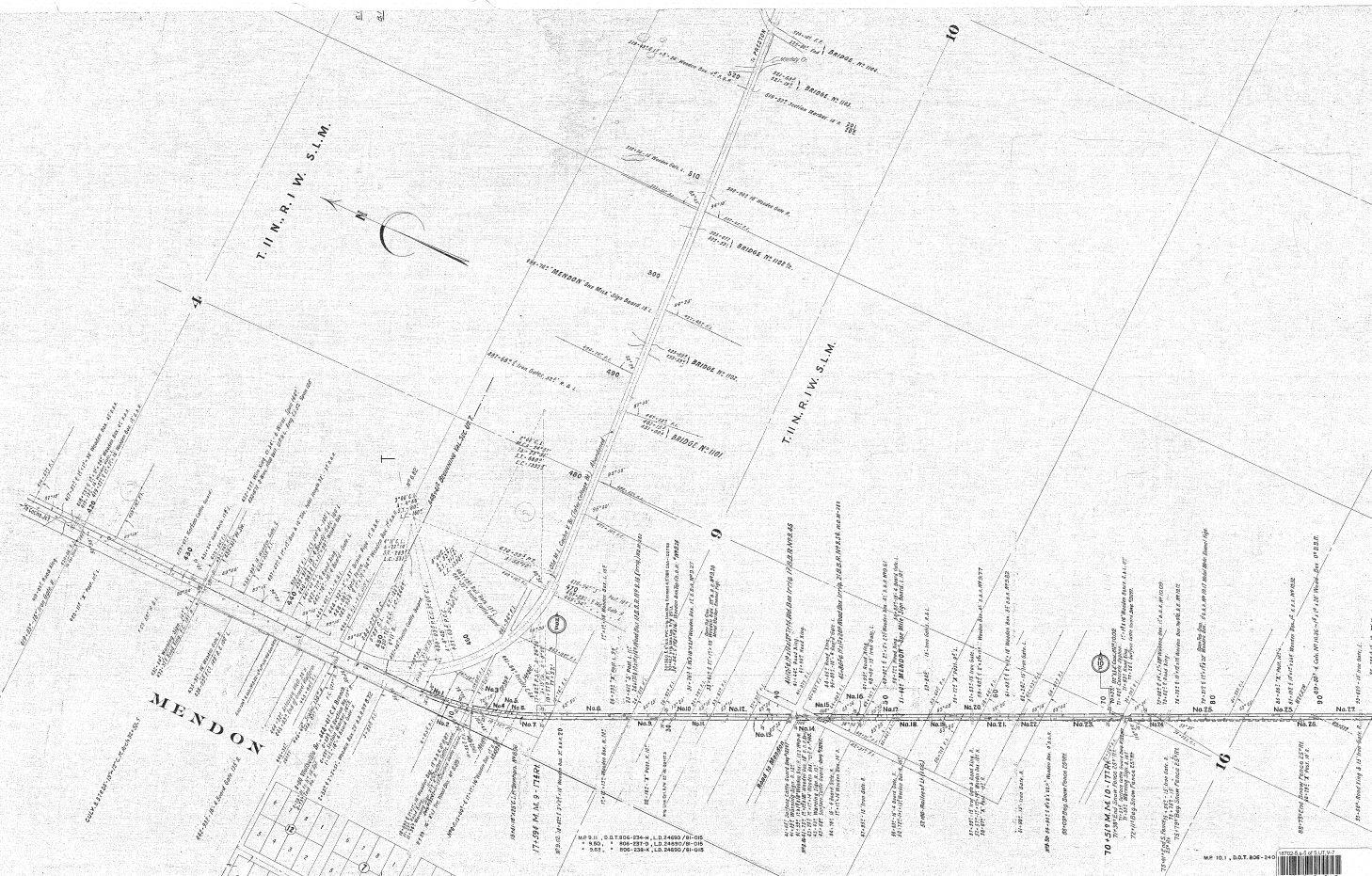
OREGON SHORT LINE RAILROAD  
CACHE VALLEY BRANCH  
WELLSVILLE LOOP  
ALIGNMENT MAP  
MENDON TO LOGAN, UTAH  
MILE POST 0 TO MILE POST 18

SCALE: 500' TO 1"

CITY ENGINEER'S OFFICE, SALT LAKE CITY, UTAH, JUNE 22, 1910

PLATTED FROM NOTES FURNISHED BY ASSISTANT ENGINEER A. H. NELSON, DATED MAY 13 TO 15, 1910  
PHYSICAL VALUATION SURVEY BY GEO. B. STODOL, ASSISTANT ENGINEER  
GRADUATED BY S. J. H. TRIGGS BY S. J. H. TRIGGS, ASSISTANT ENGINEER

DRAWING NO. 10755  
FILE NO. 2194



MR 101, D.O.T. 802-240